




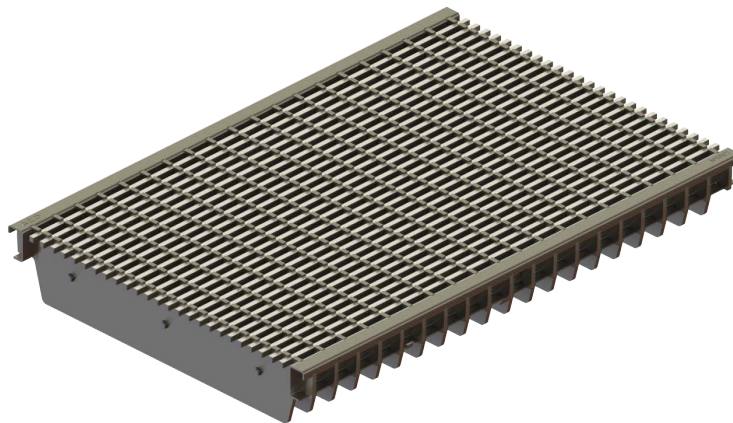




This grate is part of ACO's Heelsafe® Anti-Slip range. For more information visit [www.heelsafe.com.au](http://www.heelsafe.com.au)

**Product Features**

-  Certified to AS 3996 Load Class D (240kN) (NATA endorsed load test reports available)
-  AS 3996 (Clause 3.3.6) compliant for surface openings in pedestrian areas  
ASME A112.6.3 (Section 7.12) compliant - American high heel standard
-  AS 4586: P5– Slip resistance classification for Wet Pendulum Test
-  AS 1428.1 (Clause 4.4b) compliant for wheelchair and walking cane safety
-  AS 3996 (Clause 3.3.7) compliant for bicycle tyre penetration resistance
  - Raised transverse bars for tread durability
  - No end bars for visual continuity
  - **DrainLok** barless and boltless locking system
  - Suitable for use with K300, KS300, H300K, H300KS channels
  - Manufactured from Grade 304 stainless steel



**Specifications**

The grate shall be ACO Type 816D Stainless Longitudinal **Heelsafe® Anti-Slip** grate with **DrainLok** barless and boltless locking system as manufactured by ACO. This grate has an overall width of 338mm and overall length of 500mm (Type 816D). Slot widths measure at a maximum of 7mm.

**Materials & Design**

The grate shall be manufactured from stainless steel and have **minimum** properties and characteristics as follows:

- Raised transverse bars for tread durability
- No end bars for visual continuity
- Manufactured from Grade 304 stainless steel
- Certified to AS 3996 Load Class D (240kN)<sup>1</sup>
- AS 4586: P5 – Slip resistance classification for Wet Pendulum Test<sup>1</sup>
- Meets AS 1428.1 (Clause 4.4b); AS 3996 (Clause 3.3.6 & 3.3.7); ASME A112.6.3 (Section 7.12)
- Intake area of 75,350mm<sup>2</sup> per half metre of grate

<sup>1</sup> NATA endorsed test reports available

For the specification of the ACO Drain channel system selected, click: <http://www.acodrain.com.au/product-support>

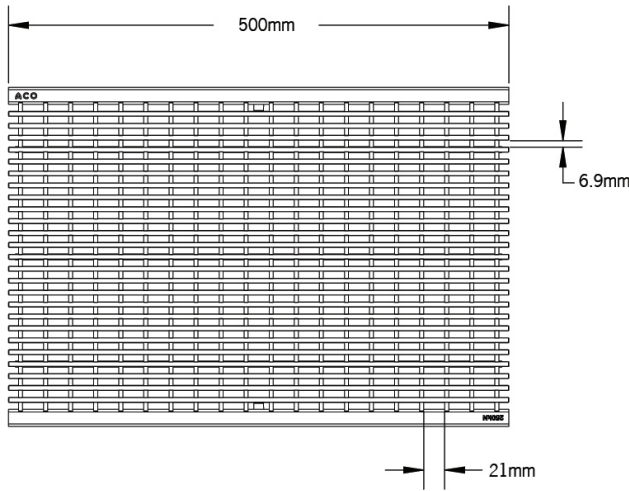
ACO Specification Information

**ACO DRAIN®**

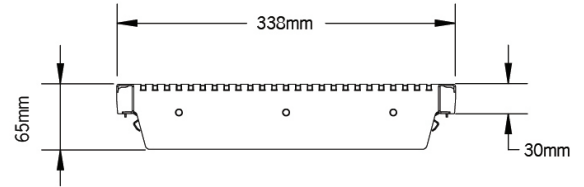
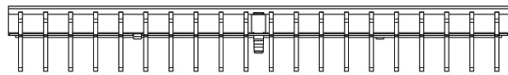
**Type 816D Stainless Longitudinal Heelsafe® Anti-Slip grate**



Plan view

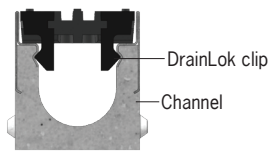


Side elevation



Description	Part No.	Length (mm)	Width (mm)	Weight (kg)
<b>DrainLok grate</b>				
Type 816D Stainless Longitudinal <b>Heelsafe® Anti-Slip</b> Grate removal tool	<b>143138</b> <b>01318</b>	500 -	338 -	15.7 0.1

**'DrainLok' locking mechanism**



ACO **DrainLok™** is a patented, boltless locking system that removes the need for bolts and bars and improves the hydraulic capacity of the channel. The **DrainLok™** mechanism simply clips into the channel edge rail for rapid installation. ACO **DrainLok™** grates are fitted with an anti-shunt mechanism that restricts unwanted grate movement when installed, improving durability and longevity of the system.

**ACO Limited**  
**New Zealand**  
Ph: 0800 448 080  
www.aconz.co.nz  
sales@aconz.co.nz



© February 2024 ACO Pty Ltd. All reasonable care has been taken in compiling the information in this document. All recommendations and suggestions on the use of ACO products are made without guarantee since the conditions of use are beyond the control of the company. It is the customer's responsibility to ensure that each product is fit for its intended purpose and that the actual conditions are suitable. ACO Pty Ltd. pursues a policy of continuous product development and reserves the right to amend specifications without notice.